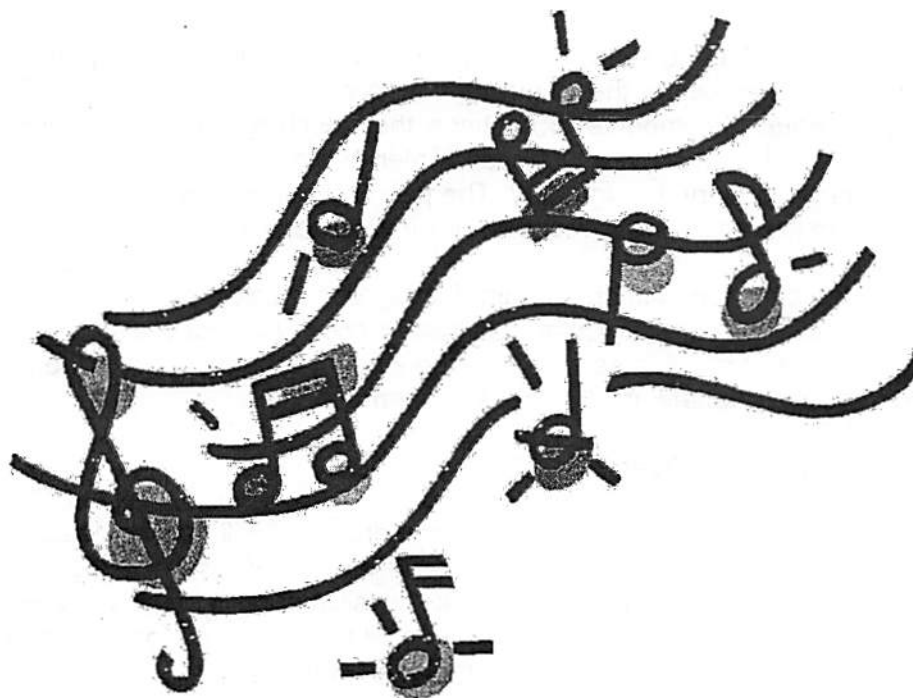


# **Coral Glades High School Music Association**

## **Student and Family Information Packet**

*-An Overview of the Music Program-*



*Welcome to the Coral Glades High School Music Program. You have made the decision to be part of an award-winning and growing program that promotes excellence in all areas. The following information has been compiled to answer the frequently asked questions of new members but is also helpful to returning students to the program.*

### ***Registration Procedures***

All incoming freshmen should select "Band 1," and/or "Eurhythmics 1" (Guard) on their Coral Glades course card. The Music Director will audition students for placement in level-appropriate classes either in the late spring or early fall.

Once you have registered for the program, please complete the Permission Form for Medical Treatment provided to you or available on our website ([cghsmusic.org](http://cghsmusic.org)). This form provides the Music Association with all pertinent contact and medical information for use throughout the school year. We communicate with parents and students regularly via text and email as well as our Facebook page (CGHS Music).

### ***Participation in Band is a Full Year Commitment***

The Coral Glades Music Program follows a school year-long performing curriculum – we perform as a marching and concert band throughout the school year. The marching band consists of all winds, percussion, and guard students. Marching band includes sessions in May, a week-long camp in June, a week-long camp in July, a week-long camp in August, practices two or three times a week in fall, football games, competitions, and the Coral Springs Holiday Parade in December. Concert band begins in the classroom in the fall and includes a winter concert, practices in the spring, and a spring concert.

At the end of the marching band season, color guard transitions into winter guard. Coral Glades Guard Ensemble is a member of the South Florida Winter Guard Association ([SFWGA.com](http://SFWGA.com)), which provides a venue for students to continue the marching band auxiliary and drill team experience into the winter and spring months. Winter guard practices begin in December and competitions run from January through May. The percussion and winds students also have the option of choosing to join an indoor percussion or winds ensemble outside of CGHS.

Based on the year-long commitment required from our music program students, it is not uncommon for a conflict in extracurricular activities to occur with our music program schedule. Once a student realizes or anticipates a conflict, the student should bring it to the attention of the music director, so an appropriate solution can be determined.

### ***I Want to be in Band and Orchestra***

Students who choose to participate in both band and orchestra will be scheduled for the Band 1 and Orchestra 1 classes. They may audition for consideration towards a higher-level class. Based upon the curriculum, the student must participate in all marching band requirements for the marching season. The student will also participate in all performances for orchestra, as typically there are no conflicts between orchestra and band during the marching season.

## ***Band Camps - All Students***

The Coral Glades Music Program runs several camps prior to the start of school in August. The camp in June is designed to introduce new students to the program and to prepare them for integration into the rest of the band. The students will learn marching drill, practice the music, exercise to build endurance, and work with the music program leaders and clinicians to prepare them for the August band camp. At the completion of the camp, they should be fully aware of what is expected of them for the fall marching season. They will also have met and worked with band leadership and know their way around the music room and the school.

In August, specialty band camp sessions are held - ***all of which are mandatory***. Percussion camp, guard camp, and full marching band camp are held prior to the start of school. The dates will be provided in advance and will be posted on the website.

Living in Florida, our students will perform in uniform during marching season in hot and humid weather. Attending band camp is part of their conditioning for the anticipated demands of the season. We encourage our students to not only practice their instruments during the summer, but to also exercise outside so as to be acclimated when the school year begins.

### ***What is the Camp Day Like?***

Your student should arrive at least 30 minutes before the scheduled practice time. This allows for instrument setup, preparation, and movement to the practice areas. The reverse takes place at the end of the practice. Therefore, please be advised that your student may be ready for pickup **15 to 30 minutes AFTER** the end of practice. In addition, as directed by leaders and/or clinicians, students may need to prepare for the next practice. We encourage our students to take responsibility for the instruments, equipment, and program. *We are a team!*

Marching band takes place on a field; therefore, most practices are outdoors. (In case of steady rain or lightning, practice will immediately be moved indoors.) Students should drink plenty of water the night before a practice to ensure they are well hydrated. They should not consume dairy products the morning of a practice. Students should bring a thermal jug (2 quarts or larger) of cold water to practice for the frequent water breaks. Students may refill the jug at lunchtime.

### ***Snacks/Lunch***

If the camp session is a full day, the student should pack a substantial bag lunch and beverage. Students will not leave the school property for meals during camp. If the camp goes beyond the dinner hour, they may purchase the optional meal plan or bring a substantial dinner and beverage as well. The students work hard, and they may require more food during this period so plan their food supply accordingly.

### ***Clothing - Sunscreen – Insect Repellent***

All students must wear plain or CGHSMA white or light gray t-shirts for practices. Practice and performance shirts will be provided. They must wear navy blue or black shorts. Students must wear socks and sneakers for practices and Dinkles for performances. (Dinkles are available locally at All County Music.) Guard will require shoes appropriate to the theme of the show.

The use of sunglasses and hats are strongly encouraged. Students should pack sunscreen and apply it several times during the day. Because the band room backs up to the Everglades, mosquitos and gnats are common. We strongly encourage the use of insect repellent.

Students should also be considerate of others by applying spray sunscreen or insect repellent outdoors.

***What if my Student has a Reaction to the Heat?***

Occasionally, the heat gets the better of a student and they may feel faint or nauseous. The student should immediately report any illness to a leader, clinician, or staff member. If your student has a chronic health condition, please document it on the Permission Form for Medical Treatment and ensure that your child comes prepared with required medication or equipment to every practice and performance. Depending on the context, students, staff members, or association officers may carry the medication or equipment during practices or performances.

***Attendance***

Attendance is mandatory for marching band/percussion/guard camps.

Attendance is vitally important for students to collectively achieve the planned progression and effectively contribute to the entire ensemble. The ensemble functions as a single unit; one absence diminishes the result obtained by all other ensemble members. If you are a new student with preexisting vacation plans that may create a conflict, we encourage you to discuss with Mr. Sanchez, the band director, immediately ([alexander.sanchez@browardschools.com](mailto:alexander.sanchez@browardschools.com)). All absences must be reported directly to Mr. Sanchez.

***What are the Costs and Fees for the Programs?***

The Broward County School Board provides very little support for the music program. Fees are necessary to cover the cost of band camps, practices, clinicians, music, flags, props, entry fees, uniforms, instrument rental/maintenance, and transportation. A budget is developed each spring based on the estimated operating expenses for the upcoming year. The total budgeted amount is divided by the number of participating students to determine the cost per student. Because this amount may be prohibitive for many students, the Coral Glades High School Music Association provides fundraising opportunities to keep fees and out-of-pocket expenses at a manageable level.

Fees and payment schedules for each ensemble are shown for the 2024-2025 year. Marching band fees do not include the cost of the state competition or recreational field trips. Color Guard fees do not include winter guard. Fees do not include consumable items such as required shoes, socks, gloves, etc. Students who face difficult financial situations should speak directly with the music director or the president/treasurer of the Music Association.

Payment Schedule 2024-2025		
Due Date	Marching Band	Color Guard
June 7, 2024	\$250.00	\$250.00
August 23, 2024	\$250.00	\$250.00
September 20, 2024	\$250.00	\$250.00
Total	\$750.00	\$750.00

### ***How do I Pay Fees?***

All fees, trip costs, and fundraising money should be paid by

- Check/money order/cash payable to CGHSMA and deposited in the lockbox in the music room. Please place in a sealed envelope with a note indicating the student's name and fee/event the payment is to be applied.
- Online payment via our website ([cghsmusic.org](http://cghsmusic.org)). Please include a note indicating the student name and fee/event the payment is to be applied.

### ***Fundraising***

The Coral Glades High School Music Association (CGHSMA) provides fundraising opportunities to allow each family raise the necessary funds. Many students raise the entire cost of the program through these fundraisers. This is the easiest way to offset the costs associated with being a music program member. Money raised through fundraising efforts may be applied towards fees and expenses. Families should check text messages, email, Facebook, and/or the website in order to stay informed of fundraising opportunities. Suggestions for new fundraising programs should be directed to the Vice President, Fundraising.

### ***Uniforms***

Students are measured and issued uniforms at the start of each program. Marching band measurements are usually completed during the band camp in August. Uniforms are stored in the Uniform Room and issued to students prior to each performance. If needed, uniform exchanges are done with the Uniform Coordinator. Following performances, students are expected to take uniforms home to be washed. At the end of the season, uniforms are collected for dry cleaning and repair. Students are asked to be timely when returning uniforms.

Failure to return all uniforms in their entirety will result in a school obligation.

### ***What does Color Guard Wear?***

Color guard wears a uniform designed to enhance the theme of the marching show. Members are sized during guard camp. Costumes are custom-made and takes several weeks to receive. The cost of this costume is included in the guard fees.

### ***Are there other Purchases Required and not Covered in the Fees?***

**Marching Band:** Band members are required to purchase black Dinkles marching shoes for performances and competitions. These are available online at [www.dinkles.com](http://www.dinkles.com) or at All County Music Store. The cost is about \$34.99. Students will also be required to purchase and wear black knee socks and marching gloves (supplied by the Music Association). The cost is about \$9.

Students will be issued a practice t-shirt and a show t-shirt. The cost is included in the fees.

For camp, students will need to purchase a spiral-bound dot matrix 3"x5" book of index cards at an office supply store. Students can also purchase a "Dot Book" from Amazon. It should be attached to a lanyard for use to mark drill during practice.

Instrument maintenance and supplies are not covered in the marching band fees.

**Guard:** Additional costs may include:

- Shoes for both marching band and winter guard
- If part of the weapons line, a rifle and/or saber.
- Undergarments for both seasons
- Show make-up for both seasons
- Black and white electrical tape
- Two pairs of gloves
- Duffle bag to carry their possessions
- Flag bag to carry their flags
- Team warm-up suit

**Instrument Rental:** Where available, the program will rent an instrument to a student. The student and parent must sign a rental agreement contract and pay the required fee. Summer rental fee is \$15.00 and covers rental from June-August. School year rental is \$30.00 and covers the school year. Payment can be made online through the school e-store.

**Dinner Meal Plans during Band Camp and Football Season:** Due to the long days, an optional dinner meal plan will be available for camp and football games. Meals include an entrée, side, drink, and dessert and cost about \$10 per meal. Alternatively, students may bring their own dinner.

### ***Will the Marching Band Compete?***

The marching band usually competes in regional band competitions as well as the mandatory Music Performance Assessment during the season. Costs for participation in these competitions are included in the standard fees. It is essential that students be present for all competitions and assessments. Competition dates and times are provided in advance via flyers, text, email, Facebook, and the website. Participation in a competition is an all day and evening commitment for the students and staff.

### ***Who/What are the FBA and MPA Assessments?***

Coral Glades Music Program follows a performing curriculum. Each ensemble is assessed by third party organizations, recognized for their support of the creative arts and their pursuit of best practices. The primary organization in Florida is the Florida Bandmasters Association (FBA). FBA Music Performance Assessments (MPA) are the accepted standard of evaluation for high school bands. We subscribe to their standards of excellence.

The purpose of the assessment is as follows:

- To provide opportunities for students and directors to perform in an environment which provides critical evaluation of its performance by experts in band performance,
- To provide the opportunity for students and directors to perform for their peers in a formal concert setting,

- To provide a performance opportunity which will serve as a motivational goal for students and directors,
- To provide an opportunity for students and directors to hear performances of their peers and learn from hearing those performances, and
- To provide a goal which is so compelling that the preparation for attaining that goal becomes the vehicle for continued growth and to demonstrate students' abilities to apply musical fundamentals and concepts in an ensemble performance setting.

The marching band MPA is in the fall; the concert band MPA is in the spring. Assessments are done on a district and statewide basis. It is essential that students be present for assessments. Families are encouraged to attend assessment performances.

***Do Band and Orchestra Classes Prevent me from Taking other Electives?***

Students may select other electives while participating in one or more music classes. For the required Health and Personal Fitness credit, students may take the course online via Florida Virtual School. Please speak with a guidance counselor first.

**Contact Information:**

Band Director: Alexander Sanchez  
alexander.sanchez@browardschools.com  
754-322-1302

Website: [www.cghsmusic.org](http://www.cghsmusic.org)

Facebook: CGHS Music



## 2024 Coral Glades Marching Jags Rehearsal/Competition Schedule

### Summer Camps:

June 17 – June 20 (Mon – Thur)	9:00am – 5:00pm
July 15 – July 18 ( Mon – Thur )	8:00am – 5:00pm
July 29 – August 2 (Mon – Fri )	8:00am – 6:30pm

### Fall Rehearsals/Shows: Updated 4/18/24

Monday	August 5	3:30 – 7:30
Wednesday	August 7	3:30 – 7:30
Monday	August 12	3:30 – 7:30
Wednesday	August 14	3:30 – 7:30
Monday	August 19	3:30 – 7:30
Wednesday	August 21	3:30 – 7:30
Monday	August 26	3:30 – 7:30
Wednesday	August 28	3:30 – 7:30
Monday	September 2	No School
Wednesday	September 4	3:30 – 7:30
Friday	September 6	Football Game vs Coral Springs



Monday	September 9	3:30 – 7:30
Wednesday	September 11	3:30 – 7:30
Friday	September 13	Football Game vs Stranahan
Monday	September 16	3:30 – 7:30
Wednesday	September 18	3:30 – 7:30
Friday	September 20	Football Game vs Hallandale
Monday	September 23	<b>No School</b>
Wednesday	September 25	3:30 – 7:30
Friday	September 27	Football Game vs Spanish River
Saturday	September 28	<b>Saturday Rehearsal Camp 8:00am-6:30pm</b>
Monday	September 30	3:30 – 7:30
Wednesday	October 2	3:30 – 7:30
Saturday	October 5	<b>Competition #1 <u>Falcon Sound Invitational @Flanagan HS</u></b>
Monday	October 7	3:30 – 7:30
Wednesday	October 9	3:30 – 7:30
Saturday	October 12	<b>Competition #2 <u>John I Leonard Lancer Jamboree</u></b>
Monday	October 14	3:30 – 7:30
Wednesday	October 16	3:30 – 7:30
Friday	October 17	Football Game vs Taravella (SWAMP BOWL)
Saturday	October 19	<b>Saturday Rehearsal Camp 8:00am – 6:30pm</b>
Monday	October 21	3:30 – 7:30
Wednesday	October 23	3:30 – 7:30
Saturday	October 26	<b>Broward County Marching Band MPA (Location TBD)</b>

Monday	October 28	3:30 – 7:30
Wednesday	October 30	3:30 – 7:30
Saturday	November 2	<b>Competition #3 <u>Park Vista Striking Cobra Invitational</u></b>

**\*FMBC STATE FINALS COMPETITION TBD\***

**SAT Testing Dates:**

- August 24 - October 5 - November 2 - December 7 -

# Coral Glades Marching Band Member Agreement

This agreement outlines the core values of the Coral Glades Marching Band. Any violations of these values will be dealt with case-by-case with the director's discretion. We believe in second chances and creating plans with parents to better our students.

As a member of the Coral Glades Marching Band (or any subsidiaries including but not limited to concert band, winter guard, or indoor drumline), I hereby agree to conduct myself according to the following expectations:

## **Character Standards**

1. I will be respectful, sincere, and loyal at all times to my teammates, directors, and anyone else who works with our band program.
2. I will have appropriate behavior towards community, administrators, faculty, officials, coaches, athletes, trainers, or other students.
3. I will not have an unexcused absence from practice, games, or competitions for any other reason than personal illness or family emergency.
4. I will not use tobacco or illegal drugs (including alcohol and vapes) in any form.
5. I will respect other's personal items or organization equipment.
6. Social Media: I will not make negative posts about our school, organization, other schools, staff or teammates.

## **Organization Standards**

1. I will maintain passing grades and good conduct marks in all classes.
2. I will attend all mandatory rehearsals and be punctual to all events.
  - Any excused absence must be approved by the director 48 hours in advance.
3. I will dress appropriately for school and rehearsals. (NO JEANS or OPEN TOED shoes for marching practice)
4. I will be punctual on all due dates, including but not limited to assignments and band payments.
  - I understand that late or missing payments will result in an obligation. Fees and fines must be cleared to purchase parking passes, homecoming tickets, prom tickets, exemption cards, etc.
5. I understand that there are non-refundable fees associated with Marching Band. By signing this document, I assume financial responsibility for my student's participation in the marching band activity. \_\_\_\_\_ (Parent Initial)
6. I understand that a competitive performance spot assignment is not guaranteed but based on the core values and maintaining and improving my performance skillset throughout the season. \_\_\_\_\_ (Student Initial)

## **Equipment Standards**

1. I will be responsible for all equipment entrusted to me and return it in the same condition.
2. I will maintain my flip folder and dot book for the year.
3. I will purchase, maintain, and use a one (1) gallon water jug for practice/games.

**This set of expectations has been set forth with the purpose of allowing the marching member to be a part of a successful program, give him/her the opportunity to be a better performer, and to instill the desirable traits of good citizenship. Any performer who quits or is dismissed from the band for disciplinary reasons will be transferred, as soon as possible, out of the Coral Glades Band program for the remainder of the school year. If a member does anything in or out of school that will bring discredit to him/herself, the team, or his/her school, actions will be taken to counsel, discipline, or suspend the band member for a period of time considered to be fair and just.**

**I have read and understand the above information and will hereby abide by these standards**

\_\_\_\_\_  
Name of Band Member (Please Print)

\_\_\_\_\_  
Date

\_\_\_\_\_  
Signature of Band Member

\_\_\_\_\_  
Parent Signature

**As a parent, I understand and agree with the principles of the Marching Member Agreement. I will encourage my student to follow these guidelines in their actions as a representative of the Coral Glades High School Marching Band Program.**



THE SCHOOL BOARD OF BROWARD COUNTY, FLORIDA

**Afterschool Extracurricular and Supplemental  
Programs Parent/Legal Guardian Authorization Form**

**Required for participation in any and all afterschool clubs,  
events, activities or supplemental programs**

Student Name: \_\_\_\_\_ Telephone: \_\_\_\_\_

Club/Activity/Event Name: Marching Band Rehearsals

Description or nature of the club, activity or event:  
After school rehearsals for the 2024 marching band season

Date the club, activity or event will begin: August 12, 2024

Date the club, activity or event will end: November 20, 2024

Location of the club, activity or event: Band room, Practice Field

Name(s) of club, activity or event sponsor(s): Mr. Sanchez

Types of guests that may attend the club, activity or event: Marching Band Members

Scheduled Days of the Week: (Circle all that apply)

Monday      Tuesday      Wednesday      Thursday      Friday      Saturday

Scheduled Time: From 3:30 To 7:30

I give my child permission to participate in the above named extracurricular activity or supplemental program during the dates and times listed above for the 2023-24 school year.

Name of Parent: \_\_\_\_\_ Telephone: \_\_\_\_\_

Signature of Parent: \_\_\_\_\_ Date: \_\_\_\_\_

Scheduled days of the week and times may vary throughout the school year. Club/activity sponsor will contact parents through pre-determined forms of communication to notify of any change in meeting time or day.

**EMERGENCY CONTACT**

Name: \_\_\_\_\_ Telephone: \_\_\_\_\_

Relationship to Student: \_\_\_\_\_

*This form must be submitted and retained by the club, activity or event sponsor prior to student participation.*